

White bias tape, but only along top layer of fabric. Do bias tape first, THEN stitch together window layers.

Cut-out for vinyl window, with plain muslin behind it.

STEPS TO ASSEMBLE BACKPACK BOX

1. Cut everything out of black fabric.
2. Cut out vinyl rectangle. Use the main box-face piece, just without the extra (green) hem margins.
3. Black bias tape around window area.
4. Sew vinyl to window area.
5. Sew together the rest of the box: sew on left/right edges, sew bottom rectangle.
6. Sew the white bias tape around all the exposed edges (red dotted lines).
7. Like the vinyl, cut out a muslin rectangle the size of the face minus the (green) trim.
8. Add a little foldover hem to a short edge of the muslin.
9. Sew that on behind the vinyl, creating a windowed pocket.
10. Sew this box to the harness.

Vinyl: 4 x 6.5

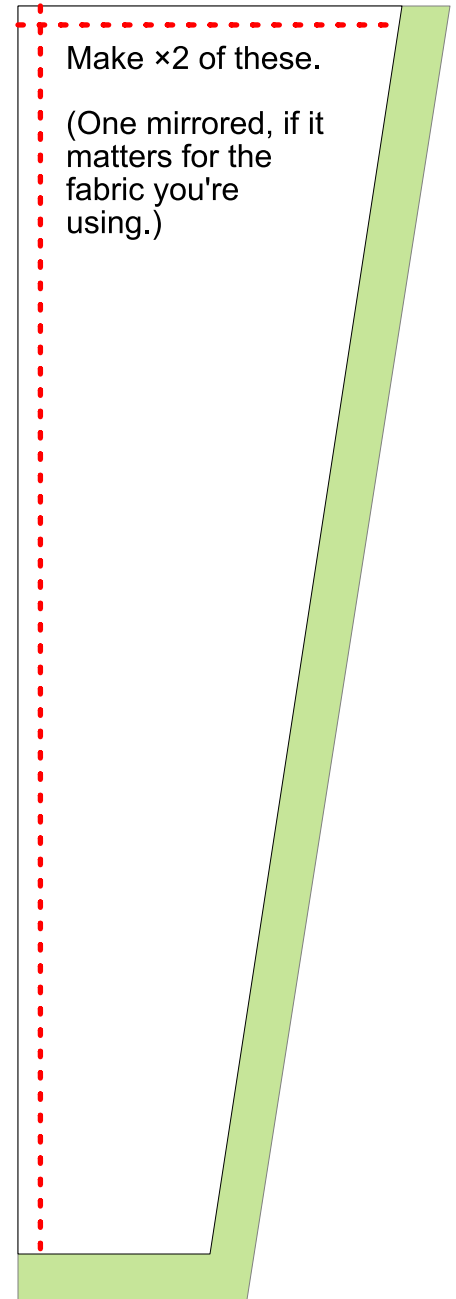
Layers: top layer, vinyl, white muslin

Black bias tape along inner window edge

Leave top open so papers/transparencies can slide into window.

Make ×2 of these.

(One mirrored, if it matters for the fabric you're using.)



Green: extra hem space to sew together panels

--- Dotted Red: Use white bias tape along these edges once assembled.

— Blue: Cutout for vinyl window. Edge with black bias tape.